

BLADE ADJUSTMENT

- What is blade adjustment?

Blade adjustment is to align the engagement of upper and lower blade of the machine by tightening/loosening blade screws and nuts.

- Why is it important?

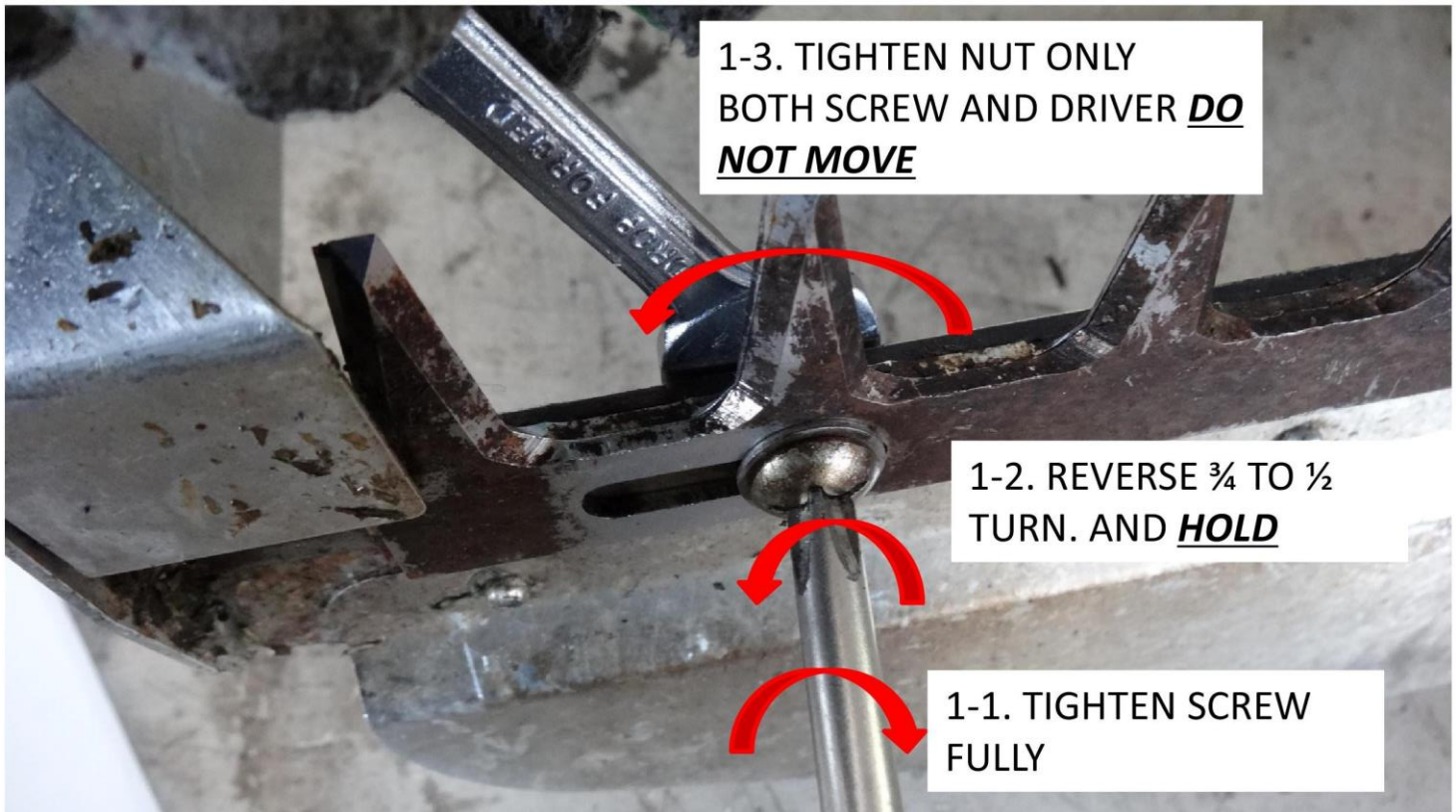
As we use the machine, the blade engagement loosens due to machine vibration and impact with plants.

When the blades are not properly aligned, the blades cannot work at their full potential.

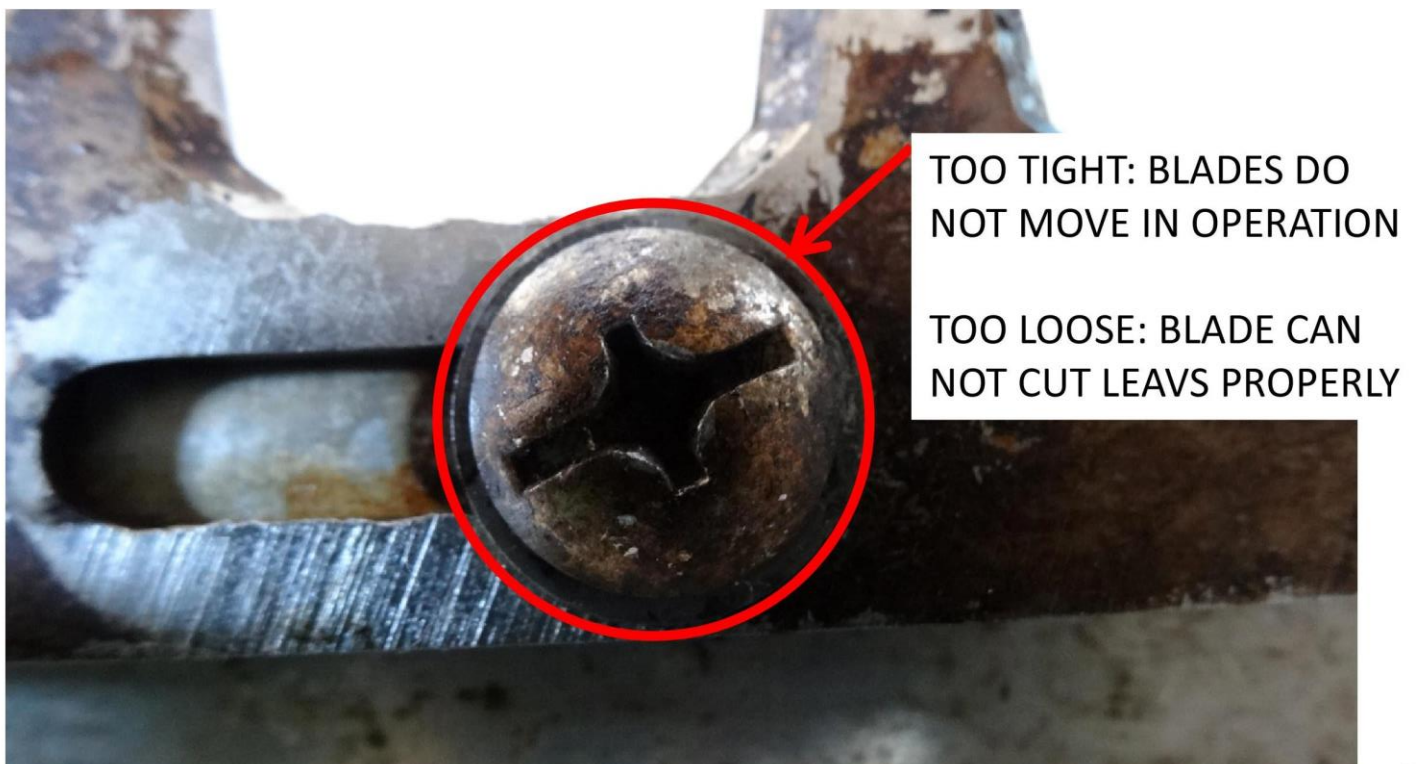
You could imagine if scissors with loose blades alignment can make a clean cut.

· How to?

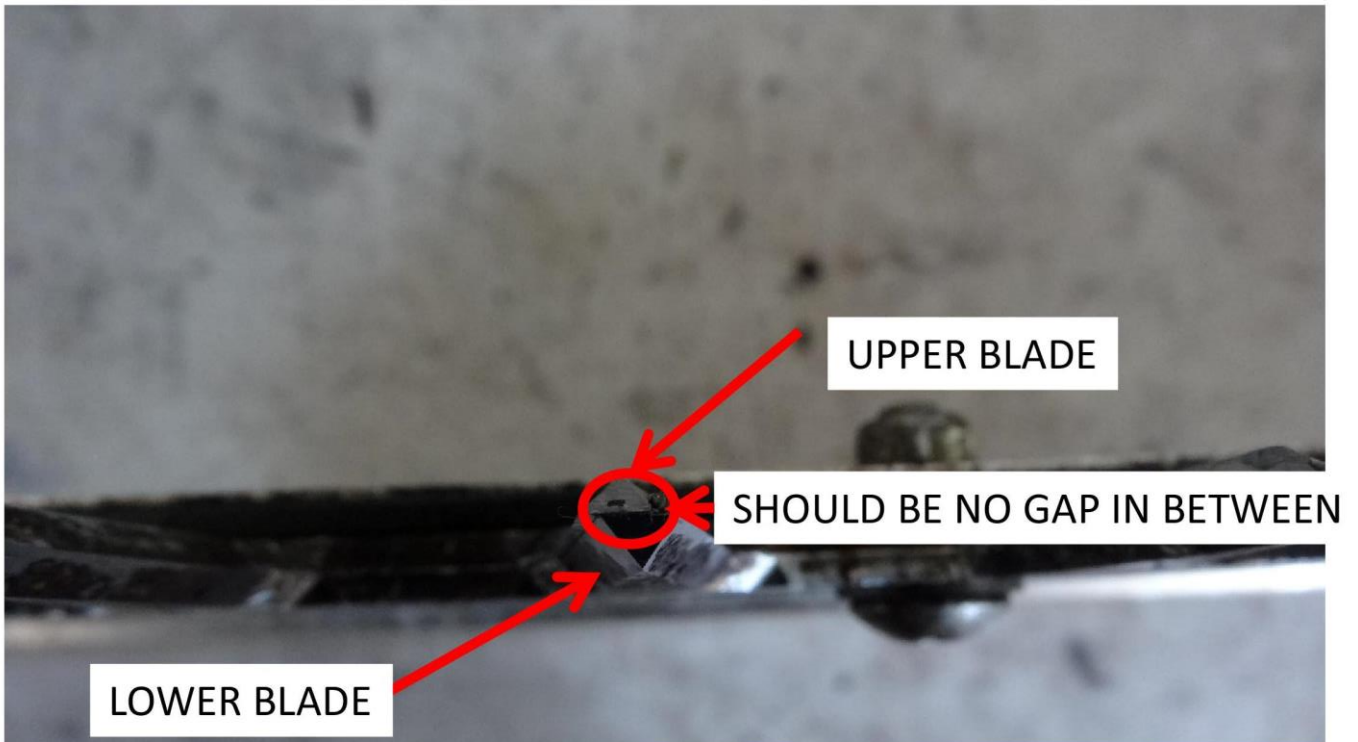
1. TIGHTEN SCREW FULLY. THEN REVERSE $\frac{3}{4}$ TO $\frac{1}{2}$ TURN



2. CHECK IF THE BLADE SLIDE WASHER MOVE FREELY



3. CHECK IF THERE ARE GAPS BETWEEN UPPER AND LOWER BLADES



Tips

- If screws and nuts are too tight, blades cannot operate. But the engine is still running. This situation will damage crank case, crank gear, and blade slide plates.

- If screws and nuts are too loose, blades will operate not only to left and right, but also bounce towards other directions. This will cause wear of the blades.

- Clean cut comes from proper alignment of the blades. You could check by checking the gap between blades and moving washers by hand.