

OCHIAI' S TEA PICKERS / TWIG CUTTERS / HEDGE TRIMMERS  
**OCHIAI CUTLERY MANUFACTURING CO., LTD.**

*58, Nishikata, Kikugawa-City, Shizuoka-Ken, Japan*

**TEL: 0537-36-2165 FAX: 0537-35-4643**

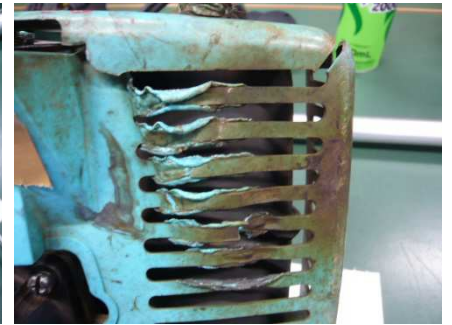
URL <http://www.ochiai-1.co.jp> Email [tokuhan@ochiai-1.co.jp](mailto:tokuhan@ochiai-1.co.jp)

Maintenance tip

Engine cover is not only to make engine look nice

March 20, 2017

Many of you might have seen melted engine covers.



Have you thought about why?

Engine cover has mainly 2 purposes;

1. To prevent users from touching heating engine.
2. To direct intake airflow to efficiently cool down the engine.

Engine covers are designed not to touch engines by installing spacers to maintain proper distance between engine cover.

If spacer goes missing, engine cover vibrates more and touches engine more often, which causes melting engine cover.

The more engine cover melts, the less efficiently airflow cools down engine.



One extreme example is that when engines run with and without covers at the same time, the one without cover breaks down faster due to lack of air cooling.

Needless to say, each and every component on the engine is installed with reasons. You may not want to disregard the importance of small items.